

MONTHLY MEMBERSHIP PROGRESS REPORT

LOCATION ONTARIO

District A 2

Results as of: 4/30/2021

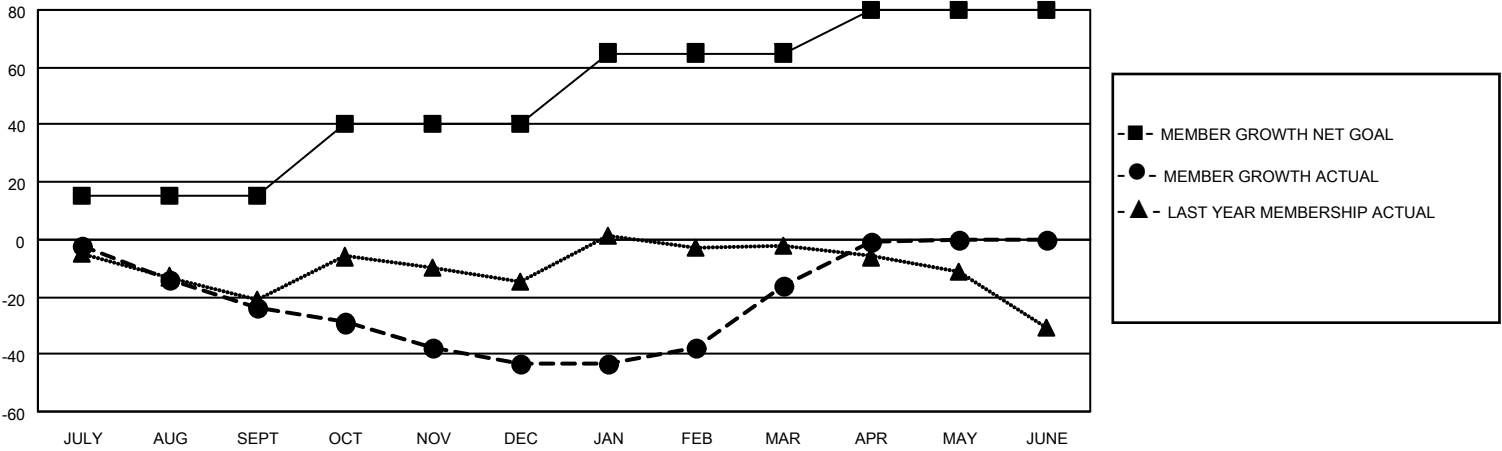
Clubs			
RESULTS FOR 2020-2021			
QUARTER	NEW CLUB GOAL	NEW CLUBS	DROPPED CLUBS
JULY/AUG/SEPT	0	0	0
OCT/NOV/DEC	0	0	0
JAN/FEB/MAR	1	0	0
APR/MAY/JUNE	0	0	0

Members			
RESULTS FOR 2020-2021			
QUARTER	MEMBER GROWTH NET GOAL	MEMBER GROWTH ACTUAL	DROPPED MEMBERS ACTUAL (including transfers)
JULY/AUG/SEPT	15	10	31
OCT/NOV/DEC	25	24	39
JAN/FEB/MAR	25	36	8
APR/MAY/JUNE	15	18	3

GOALS AND ACTUAL NEW CLUBS CUMULATIVE



GOALS AND ACTUAL MEMBERS CUMULATIVE



DROPPED CLUBS: 0	15 CLUBS OF 40 ADDED 1 OR MORE NEW MEMBERS	<u>GENDER DISTRIBUTION</u> MALE 1,039 (81.30%) FEMALE 239 (18.70%)
<u>DROPPED MEMBERS</u> DECEASED 31 CLUB CANCELLED 0 OTHER 50 <hr/> TOTAL 81	CLICK HERE FOR CUMULATIVE MEMBERSHIP DATA	TOTAL FAMILY UNIT MEMBERS 156 FAMILY MEMBERS PAYING HALF DUES 79